

JaZUp User Guide v0.2

Introduction:

JaZup is a Java based application that allow you to upgrade your AZBox to Enigma 2 and come back to the official firmware. You can also use it to upgrade from E2 to E2.

It supports installing Azbox HD Enigma 2 firmware on:

- DOM: the internal AZBox memory,
- USB: for this option you will need to have 2 USB Sticks (see further in this document) **be careful a USB HDD is viewed as any USB stick and you can lose your data.**
- HDD: internal hard disk drive (this option only applies to Premium, Premium Plus and Ultra), if you have an external HDD and want to use it for install use USB option.

JaZUp has been tested under Windows, Mac OSX and Ubuntu.

We try to make JaZUp as safe as possible to use, so some upgrade process will be performed in 2 steps actions with an Azbox Power OFF / Power ON with the back switch (cold start) in between.

So do NOT perform a simple reboot with a long Power key press on the remote control (hot start).



It is strongly advised to **disable Hardware Acceleration before upgrading your Azbox to E2. Hardware Acceleration is the main reason why some Azbox HD goes to Booting... (forever) problem.**

If you connect with JaZUp to your Azbox running the official firmware, it will check for it and disable it for you.

This version is based on the Windows version made by Telesat.

Please read carefully this User Guide since it contains important information on how to use this tool.

We are not responsible for any data lost that you may encountered using this tool.

It is your responsibility to backup all your data (HDD, USB, DOM) from your Azbox HD before using this tool.

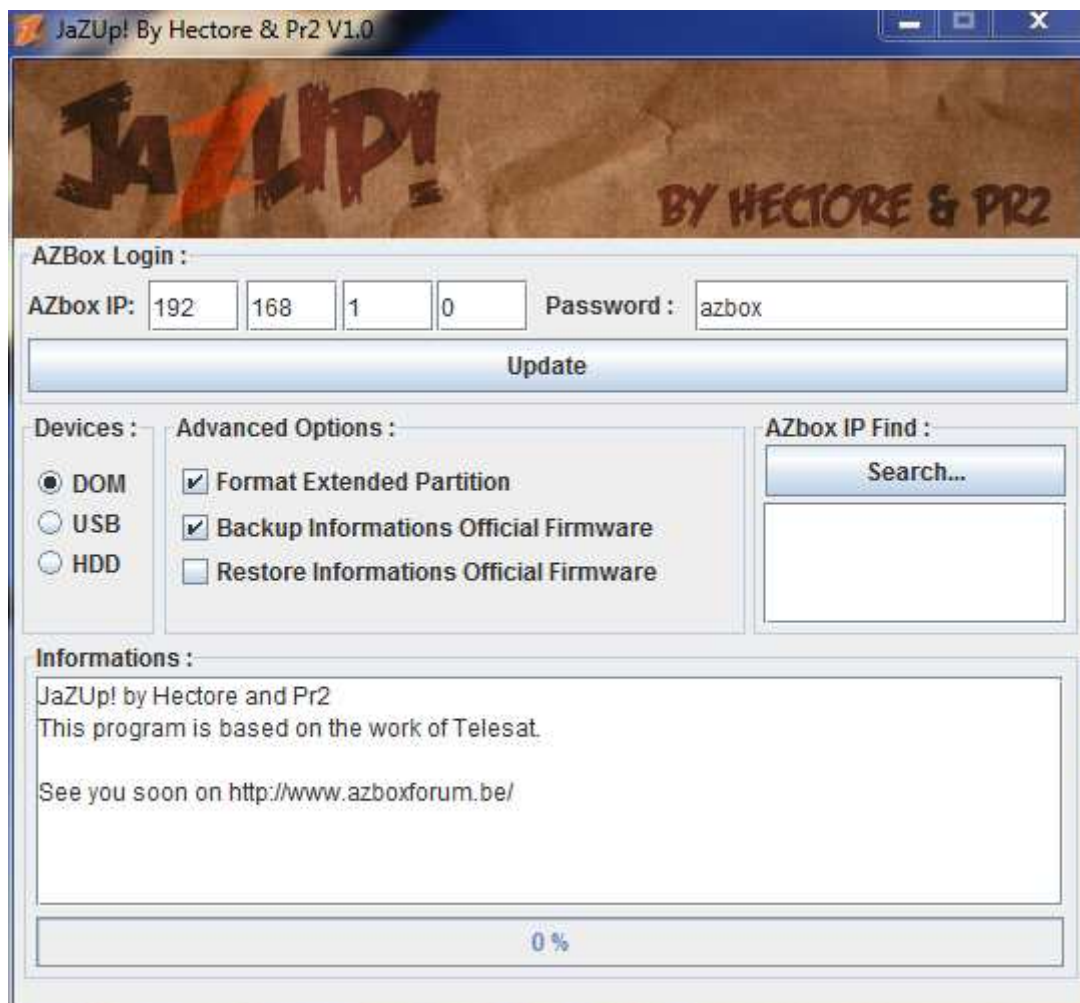
Pre-Requisite:

In order to enjoy JaZUp you will to have installed on your computer a Java Runtime Environment.

You can find the latest Java Runtime Environment minimum version is 1.5 (commonly called version 5) from:

<http://www.java.com>

Interface explanations:



Azbox IP: there you can type your Azbox IP address

Password: is the password that you set on your Azbox official firmware (used if you select Backup or Restore Informations Official Firmware options).

Devices: allows you to select where to install the E2 firmware

Advanced options:

Format Extended Partitions: you can decided not to format your extended partition, this option is useful only if you upgrade your Azbox from E2 to E2.

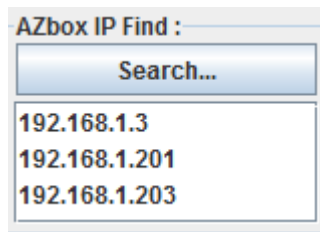
Backup Informations Official Firmware: allows you to take a backup of /DISK2 and /PLUGINS

Restore Informations Official Firmware: allows you to restore your previous backup of /DISK2 and /PLUGINS.

Azbox IP Find: Search: perform an automatic discovery of your Azbox on your local network.

Informations: will show you the update progress indication. Be careful some operations take a very long time , so please be patient.

Azbox IP Find – Search:



AZbox IP Find :

Search...

192.168.1.3
192.168.1.201
192.168.1.203

Pressing the Search... button, JaZUp will look for the all the Azboxes connected to your network and propose the list of the IP address that it finds.

If you think that your Azbox is not in the list press again search to start it again.

If you have several network interfaces in your PC, all the interfaces will be scanned to search for your Azbox.

Once your Azbox is discovered, you can click on the IP address and the field: Azbox IP will be automatically filled up.



AZBox Login :

AZbox IP: 192 168 1 3

If the search function doesn't work, you can always type in manually your Azbox IP address in the Azbox IP field.

Azbox Login - Azbox IP

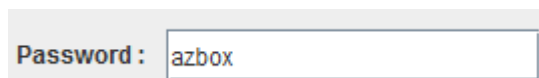
A screenshot of the 'AZBox Login' window. It features a title bar 'AZBox Login :'. Below it, the label 'AZbox IP:' is followed by four input fields containing the digits '192', '168', '1', and '0' respectively.

In this field you can manually enter your Azbox IP address.

The first digits are automatically detected from your computer local network IP address, if your computer own several network interfaces and that JaZUp choose the wrong one, it is not a problem, you can change yourself the first digit of your IP address.

A screenshot of the 'AZbox IP:' field. It shows four input boxes containing the values '10', '0', '1', and '23'.

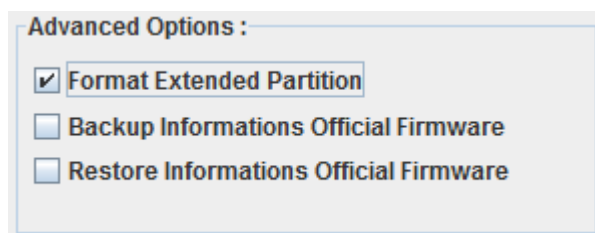
Azbox Login – Password

A screenshot of the 'Password' field. The label 'Password :' is followed by a single input box containing the text 'azbox'.

In this field you can specify the Password that you have set on your Azbox official firmware, this field is useful if you want to use the backup / restore feature of JaZUp from your Azbox with the official firmware running.

You don't need to change this field if your Azbox is already in E2 or in Rescue Mode.

Advanced Options: Format Extended partitions

A screenshot of the 'Advanced Options' section. It has a title bar 'Advanced Options :'. Below it, there are three checkboxes: 'Format Extended Partition' (checked), 'Backup Informations Official Firmware' (unchecked), and 'Restore Informations Official Firmware' (unchecked).

When you install E2 on a DOM bigger than the original one (default size is 256 MB), or on a USB stick or on HDD, JaZUp will automatically create an extended partition. This extended partition is accessible from E2 via the /media/cf folder, this is the right place for example to store your Picons.

So when you upgrade from E2 to a newer E2 version you will probably not want to lose your extended partition data.

So to preserve your extended partition data (/media/cf) please check that this option is not selected.

Be careful that the first time that you install E2 on any selected device, the extended partition will be formatted even if you didn't check Format Extended partition. And this process can take a very long time since it will format all the remaining space on your device, so the bigger it is, the longer it will take to format! Please, be patient!

Advanced Options: Backup Informations Official Firmware

This option allows you to perform a backup of your /DISK2 and /PLUGINS on any FAT/FAT32 formatted USB stick.

In order to have this option working properly, you need to type the password that you set on your Azbox official firmware in the field, if you didn't change it leave azbox (which is the default one).

Password :

Jazup can connect to your Azbox in official firmware and performed a backup of your Azbox configurations and plugins.

Insert your FAT/FAT32 formatted USB stick into your Azbox HD running the official firmware.

Select:

☒ Backup Informations Official Firmware

And press the Update button

It will create a file *jazbackup.tgz* on your USB stick.

You can then safely store the file: *jazbackup.tgz* to use later on the restore feature.

Advanced Options: Restore Informations Official Firmware

This option allows you to perform a restore of your /DISK2 and /PLUGINS from your USB stick.

In order to have this option working properly, you need to type the password that you set on your Azbox official firmware in this field, if you didn't change it leave azbox (which is the default one).

Password :

Retrieve the USB stick with your backup or copy the file *jazbackup.tgz* back to the root of a FAT/FAT32 formatted USB stick.

Connect it to your Azbox HD running the official firmware.

Select

☒ Restore Informations Official Firmware

And press the update button.

Jazup will connect to your Azbox in official firmware and restore the backup.

You will need to reboot your Azbox in order for the restored files to be taken into account.

IMPORTANT Remarks:

Disable Hardware Acceleration



It is strongly advised to **disable Hardware Acceleration before upgrading your Azbox to E2. Hardware Acceleration is the main reason why some Azbox HD goes to Booting... (forever) problem.**

If you connect with JaZUp to your Azbox running the official firmware, it will check for it and disable it for you.

JaZUp can help you with this!

When your Azbox is still with the official firmware, define your Azbox password and Azbox IP and press Update. JaZUp will connect to your Azbox and check for and disable Hardware Acceleration if needed. Then you will need to Power Off / Power On your Azbox. Then process with the upgrade.

Some processes takes a long time to run: be patient!

JaZUp is reliable, it sends upgrade commands to your Azbox HD and your Azbox HD performed the upgrade operations. Some steps take a long time.

For example unpacking the firmware, copying E2 kernel files, formating the partitions, just be patient and wait!

If you decide to install E2 on a HDD it will takes an even longer time since the extended partition will need to be formatted the first time, depending on the size of your HDD this can takes a very long time! So please be patient, even if your didn't tick the format extended partition this is not taken into account if it is the first time that you install E2 on your HDD and that the partitions are just created in this case, all the partitions will be formatted including the extended one.

The option: Format extended partition will only be taken into account if you upgrade from E2 to E2.

Upgrade to E2 on DOM

All data in your DOM will be deleted, so you will lose all your official firmware configuration and plugins.

From official firmware:

Copy E2 image file: ***patch.bin*** to the root of a FAT/FAT32 formatted USB stick.

You will need to have at least 150 MB of free space on your USB stick after having copied ***patch.bin*** on it! Some temporary files will be created on your USB stick during the upgrade.

Insert the USB stick into your Azbox, if you want JaZUp to create a backup of your Azbox official firmware configuration select this option and press Update.

Once the backup is done, reboot your Azbox and you will get the Azbox standard Upgrade screen. Select 1. Upgrade USB

Wait for this operation to complete and reboot your Azbox.

You will come to Rescue Mode, the front panel of your Azbox will show you Rescue Mode? Followed by the IP address received from your DHCP server.

You can also use the build-in auto discovery function of JaZUp to find your Azbox IP address.

Once you have find the IP address enter it in Jazup, select DOM and press Update.



If your DOM was partitioned for the official firmware or not partitioned, This will be a 2 step upgrade process.

JaZUp will create the partitions for Enigma 2 and it will prompt you to Power OFF / Power ON your Azbox.

Please use your Azbox power switch on the back to perform this operation.

Then restart your Azbox DOM - E2 update process with JaZUp.

This is a safety measure taken by JaZUp to avoid data corruption while copying firmware, since some adapter doesn't like the hot partitions change.

Once the upgrade is finished, you can remove your USB stick from your Azbox HD.

Upgrade from E2 to E2:

Copy E2 image file: **patch.bin** to the root of a FAT/FAT32 formatted USB stick.

You will need to have at least 150 MB of free space on your USB stick after having copied **patch.bin** on it! Some temporary files will be created on your USB stick during the upgrade.

Insert the USB stick into your Azbox and reboot your Azbox.

You will come to Rescue Mode, the front panel of your Azbox will show you Rescue Mode? Followed by the IP address received from your DHCP server.

You can also use the build-in auto discovery function of JaZUp to find your Azbox IP address.

Once you have find the IP address enter it in Jazup, select DOM, select if you want to format your extended partition (if applicable) and press Update.

Once the upgrade process is finished, you can remove the USB stick.

Upgrade to E2 on USB



Disconnect any external USB HDD that you have connected to your Azbox before processing with update. **Except if your goal is to install E2 on your external USB HDD.**

We will take no responsibility in case of data lost.

For JaZUp an external USB HDD is a normal USB stick so it will use it to install E2, so all your data will be lost since partitions will be changed!

From official firmware:

This option will not change anything in your DOM, so if you have the official firmware installed in your DOM, you can return to the official firmware with JaZUp without losing your settings.

Remove any USB device connected to your Azbox HD.

Select 2 different USB sticks of at least 250 MB each.

The first USB stick needs to be formatted in FAT/FAT32, then copy the E2 ***patch.bin*** file to the root of this USB stick. This stick will remain like it is, E2 will be installed on the other USB stick.

Format the second USB stick into FAT/FAT32 (be careful minimum size is 256 MB).

Insert the first USB stick (the one with patch.bin) into your Azbox running the official firmware, specify the Azbox IP address and press the update button. JaZUp will check on your official firmware if hardware acceleration needs to be disabled, reboot your Azbox.

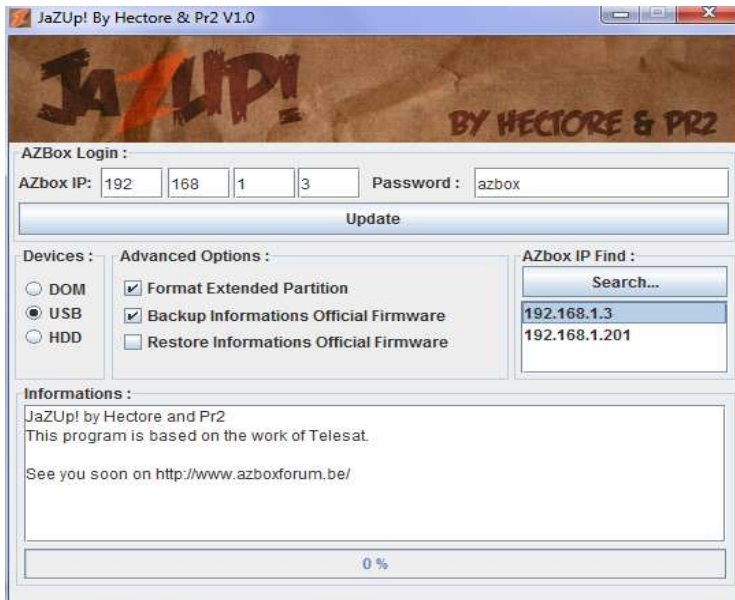
On the Upgrade screen select 1. Upgrade USB.

When the process is finished reboot your Azbox.

You will be now in Rescue Mode, check the front panel of your Azbox to get the IP address or use the JaZUp auto-discovery process, type the Azbox IP address into JaZUp.

In Rescue Mode connect your second USB stick, this one will be the one which will host E2.

Select USB has device in JaZUp and press the Update button.



Once JaZUp prompt you for it, remove the USB with ***patch.bin*** and leave the second USB into your Azbox.

Upgrade from E2 on USB to E2 on USB:

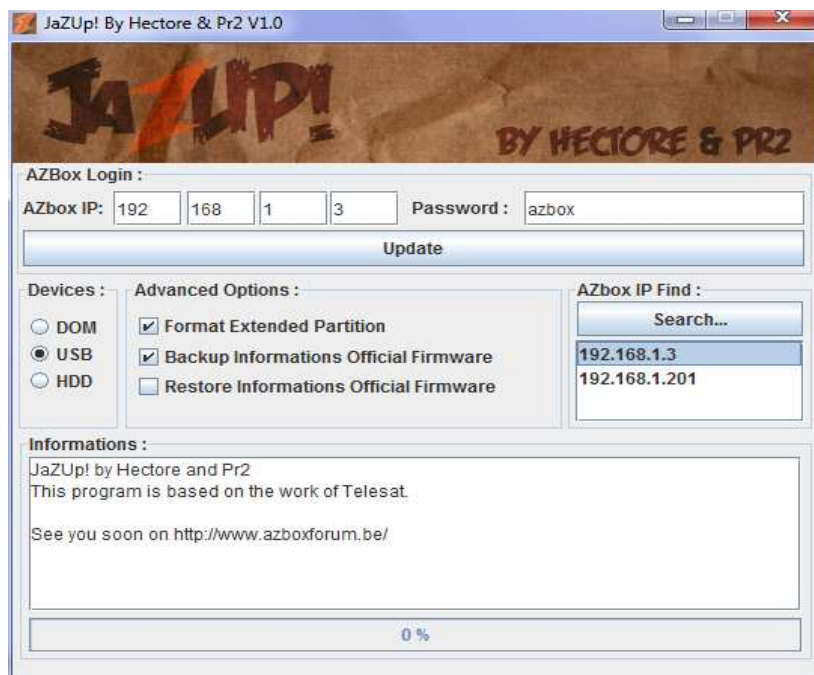
Take an USB stick, format it in FAT/FAT32, then copy the E2 patch.bin file to the root of this USB stick. This stick will remains like it is, E2 will be installed on the other USB stick.

Power off your Azbox and remove the USB stick currently hosting E2.

Insert the USB stick with ***patch.bin*** on it into your Azbox HD USB slot and power it on.

You will be now in Rescue Mode, check the front panel of your Azbox to get the IP address or use the JaZUp auto-discovery process, type the Azbox IP address into JaZUp. In Rescue Mode connect back your USB stick hosting E2.

Select USB has device in JaZUp, select if you want to format extended partition or not, and press the Update button.



Once JaZUp prompt you for it, remove the USB with *patch.bin* and leave the second USB into your Azbox.

Upgrade to E2 on internal HDD

This options is reserved for Azbox HD Premium, Premium Plus, Ultra equipped with an internal HDD.

This operation will not change anything in your DOM, so if you have the official firmware installed in your DOM, you can return to the official firmware with JaZUp without losing your settings.

If you use an external USB HDD and want to use it to host E2, please use the USB upgrade process and put your HDD as second USB stick.



**All the datas on your internal HDD will be lost.
The partitions on your internal HDD will be changed and formatted.
The whole format process will take a (very) long time so be patient, JaZUp is not blocked, it just waits for the format to complete.**

From official firmware:

Format your USB stick into FAT/FAT32, then copy the E2 ***patch.bin*** file to the root of this USB stick.

Insert this USB stick into your Azbox running the official firmware (run JaZUp on your official firmware to disable hardware acceleration), reboot your Azbox.

On the Upgrade screen select 1. Upgrade USB.
When the process is finished reboot your Azbox.

You will be now in Rescue Mode, check the front panel of your Azbox to get the IP address or use the JaZUp auto-discovery process, type the Azbox IP address into JaZUp.

Select HDD as device in JaZUp and press the Update button.

Be carefull depending on your HDD size the format extended partition can take a very long time, so please be patient, JaZUp is not blocked, it just wait for the end of the formatting.

Upgrade from E2 to E2:

Format your USB stick into FAT/FAT32, then copy the E2 patch.bin file to the root of this USB stick.

Reboot your Azbox.

You will be now in Rescue Mode, check the front panel of your Azbox to get the IP address or use the JaZUp auto-discovery process, type the Azbox IP address into JaZUp.

Select HDD as device in JaZUp, select if you want or not to format extended partition and press the Update button.

Remark: if you didn't select Format Extended Partition, you will not lose your HDD data. If you perform an upgrade from E2 to E2 it is strongly adviced to not select this option.

Known issues:

If you install E2 on your internal HDD and want to test a new version on a USB stick, unfortunately your Azbox will always boot from the internal HDD. So you cannot have test a new version from USB if you previously install E2 on your internal HDD.

We hope that The_Ripper will fix this in a next release.